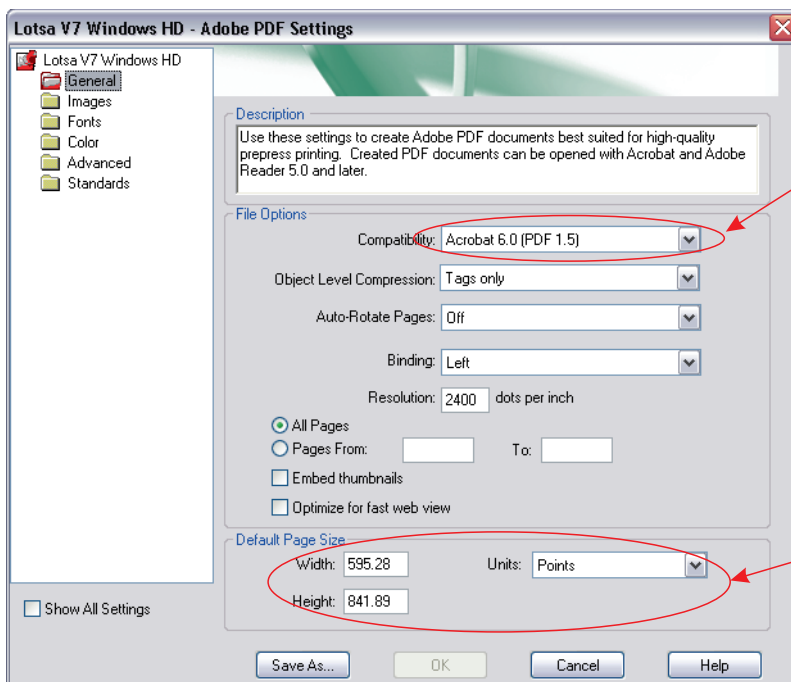
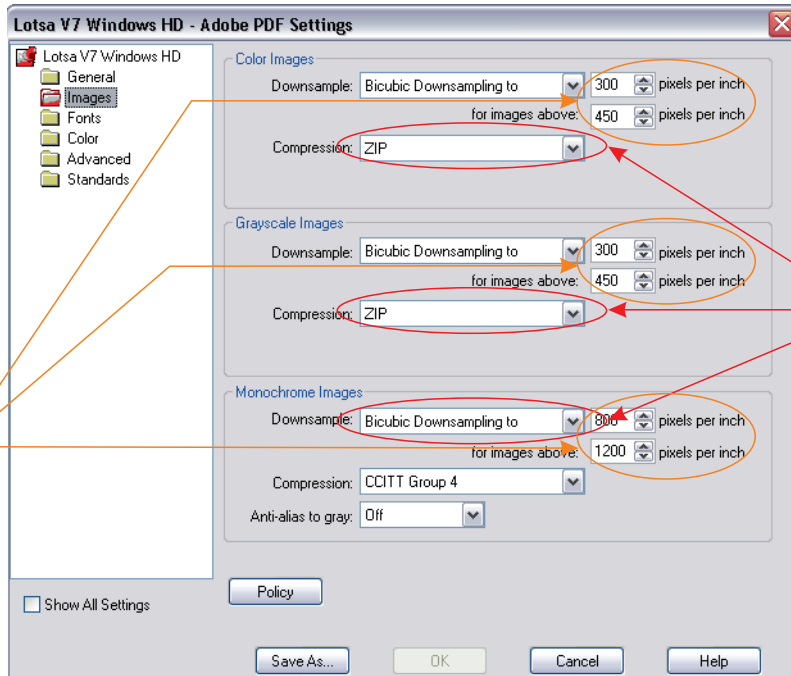


# Brief Explanation of Lotsa Distiller Settings



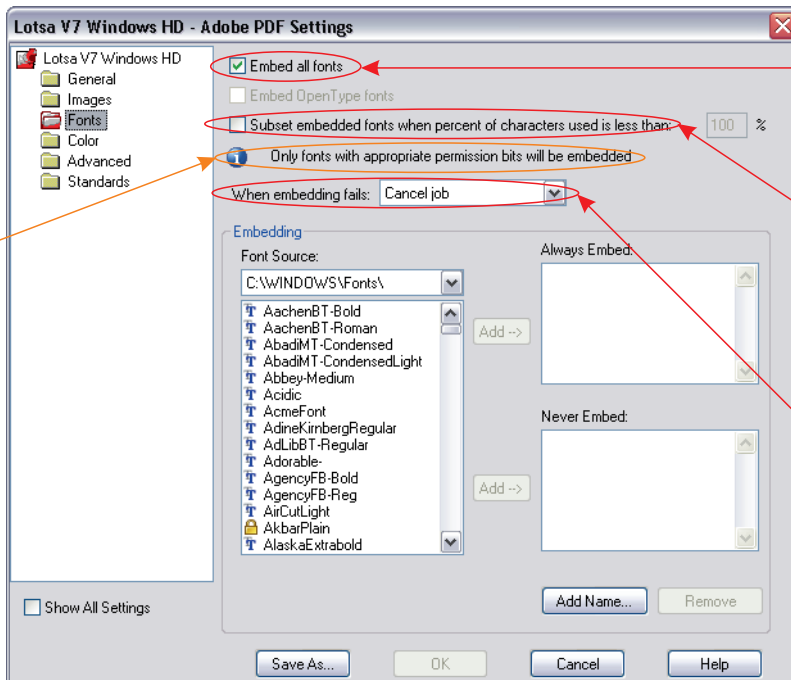
*must be v1.5*

*over-riden by document settings when pdf is output*



*images do not need to be larger than this*

*can be changed to jpeg MAXIMUM if pdf file size is too cumbersome. Keep in mind use of jpeg settings can adversely affect image quality*

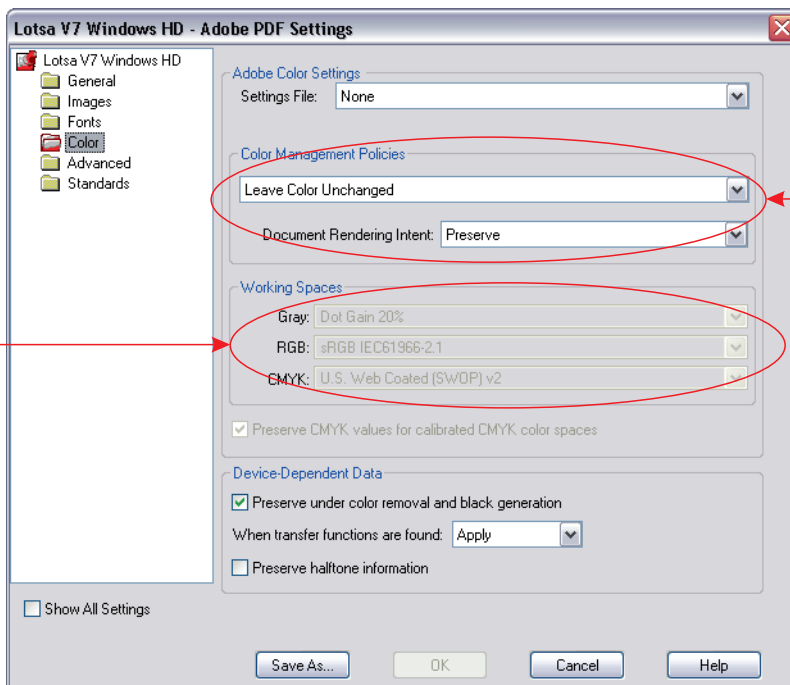


*you must curve any fonts that cannot be embedded due to licensing restrictions*

*must be turned on*

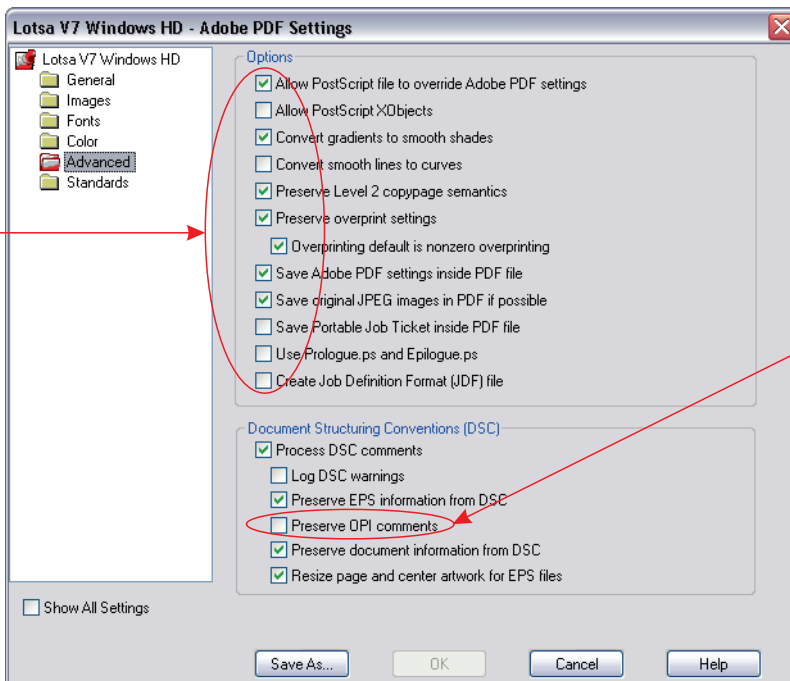
*avoid using as it does not embed the complete font which prevents us from editing typo's at the last minute*

*Set to CANCEL to alert that there are font issues present*



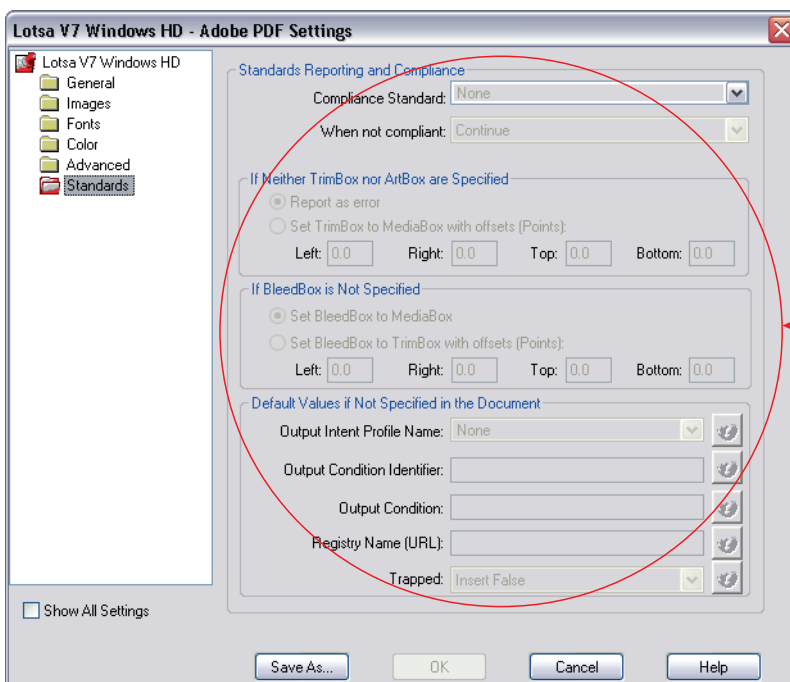
*this should always be "greyed out" (inactive)*

*this is to ensure colours remain as true to their original intent. Please keep in mind that artwork designed in RGB or with ICC profiles can have dramatic colour shifts when printed CMYK.*



*optimal settings for PDF content*

*must be turned off and should not be used in originating graphic package either. OPI "links" to hi-res images and places a "preview" jpg in the document. This can mean that even though you used a 1000dpi TIFF image, OPI linking has put a 150dpi jpg (for example) in the PDF as a placeholder. As OPI requires access to the parent system, when it can't find the original file it uses the "preview" to print from resulting in lower image quality. Numbers in this example are purely theoretical.*



*all off (greyed out)*